

# KK liegend

StandNr: 44

BENITZ, Ines #999903980

# offene Klasse

liegend Wertung

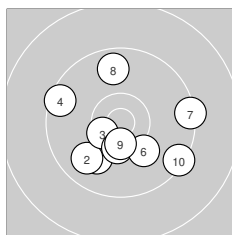
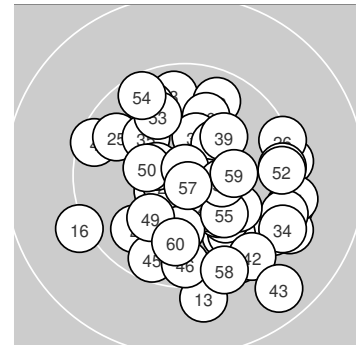
StartNr: 179

11.12.2024 11:29

SG Bockau

SG Bockau

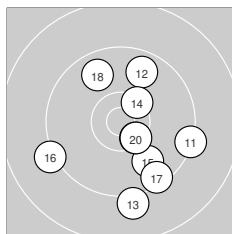
Ergebnis: **597.0** (572)  
 Serien: 99.5 98.0 98.8 100.9 99.0 100.8  
 Zähler: 33 26 1 0 0 0 0 0 0 0  
 Innenzehner: 19  
 Weitester: 1733 (43.), 1463 (13.), 1394 (16.)  
 beste Teiler: 84.0 (51.), 100.8 (29.), 124.0 (57.)  
 Trefferlage: 2.51 mm rechts, 2.00 mm tief  
 Streuwert: 5.90, horizontal: 6.07, vertikal: 5.72



### Serie 1: 99.5 (95)

|        |       |         |         |         |
|--------|-------|---------|---------|---------|
| 10.0 ↙ | 9.9 ↙ | 10.5* ↙ | 9.5 ↖   | 10.4* ↓ |
| 10.1 ↘ | 9.4 → | 9.8 ↑   | 10.5* ↓ | 9.4 ↘   |

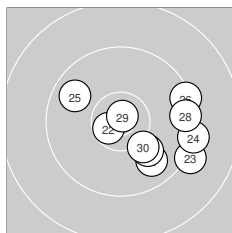
beste Teiler: 369.1 (3.), 374.0 (9.), 451.6 (5.)  
 Trefferlage: 0.07 mm rechts, 1.91 mm tief  
 Streuwert: 6.29, horizontal: 7.12, vertikal: 5.34



### Serie 2: 98.0 (93)

|       |       |       |         |         |
|-------|-------|-------|---------|---------|
| 9.3 ↘ | 9.8 ↑ | 9.1 ↓ | 10.4* ↗ | 9.9 ↘   |
| 9.2 ↙ | 9.5 ↘ | 9.8 ↘ | 10.5* ↘ | 10.5* ↘ |

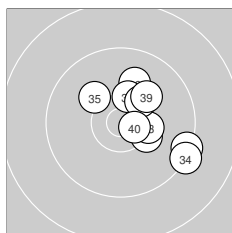
beste Teiler: 390.7 (19.), 396.9 (20.), 445.2 (14.)  
 Trefferlage: 2.12 mm rechts, 2.66 mm tief  
 Streuwert: 7.06, horizontal: 6.55, vertikal: 7.53



### Serie 3: 98.8 (94)

|       |         |       |         |        |
|-------|---------|-------|---------|--------|
| 9.9 ↘ | 10.6* ↙ | 9.2 ↘ | 9.3 ↘   | 9.8 ↖  |
| 9.4 → | 10.1 ↘  | 9.5 → | 10.8* ↑ | 10.2 ↘ |

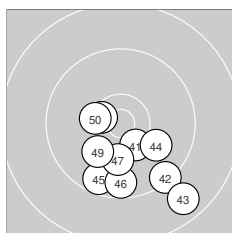
beste Teiler: 100.8 (29.), 243.5 (22.), 601.4 (30.)  
 Trefferlage: 5.26 mm rechts, 1.62 mm tief  
 Streuwert: 5.79, horizontal: 7.03, vertikal: 4.19



### Serie 4: 100.9 (98)

|        |         |         |        |         |
|--------|---------|---------|--------|---------|
| 9.4 ↘  | 10.3* ↘ | 10.3* → | 9.3 ↘  | 10.2 ↖  |
| 10.0 ↑ | 10.4* ↑ | 10.3* ↗ | 10.1 ↗ | 10.6* ↘ |

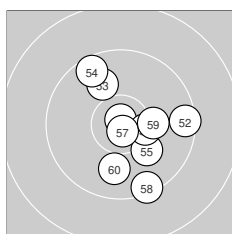
beste Teiler: 258.6 (40.), 474.8 (37.), 497.2 (33.)  
 Trefferlage: 4.24 mm rechts, 0.93 mm hoch  
 Streuwert: 4.63, horizontal: 4.75, vertikal: 4.51



### Serie 5: 99.0 (95)

|         |        |         |        |         |
|---------|--------|---------|--------|---------|
| 10.4* ↘ | 9.4 ↘  | 8.8 ↘   | 10.0 ↘ | 9.6 ↓   |
| 9.6 ↓   | 10.2 ↓ | 10.5* ↖ | 10.1 ↙ | 10.4* ↖ |

beste Teiler: 352.9 (48.), 457.9 (50.), 463.5 (41.)  
 Trefferlage: 1.16 mm rechts, 6.01 mm tief  
 Streuwert: 5.22, horizontal: 5.59, vertikal: 4.81



### Serie 6: 100.8 (97)

|         |         |        |        |        |
|---------|---------|--------|--------|--------|
| 10.8* ↑ | 9.5 →   | 10.0 ↘ | 9.6 ↖  | 10.1 ↘ |
| 10.4* → | 10.8* ↓ | 9.4 ↓  | 10.2 → | 10.0 ↓ |

beste Teiler: 84.0 (51.), 124.0 (57.), 444.7 (56.)  
 Trefferlage: 2.18 mm rechts, 0.73 mm tief  
 Streuwert: 5.57, horizontal: 4.90, vertikal: 6.17