

# KK liegend

StandNr: 45

BENITZ, Ralf #999903979

# offene Klasse

liegend Wertung

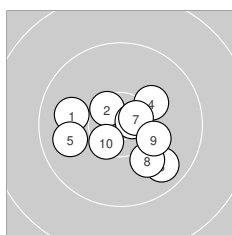
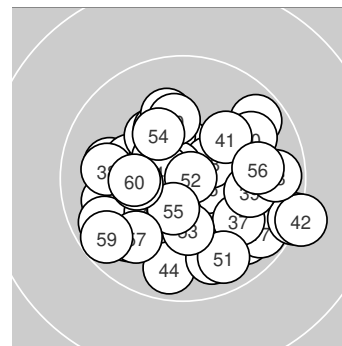
StartNr: 178

13.11.2024 11:43

SG Bockau

SG Bockau

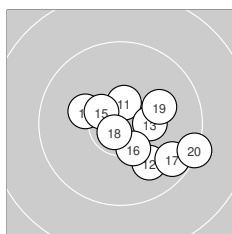
Ergebnis: **610.4** (582)  
 Serien: 102.4 101.9 102.3 100.8 101.2 101.8  
 Zähler: 42 18 0 0 0 0 0 0 0 0  
 Innenzehner: 24  
 Weitester: 1346 (42.), 1267 (20.), 1034 (59.)  
 beste Teiler: 84.3 (52.), 146.6 (48.), 172.6 (18.)  
 Trefferlage: 0.74 mm rechts, 0.87 mm tief  
 Streuwert: 4.78, horizontal: 5.26, vertikal: 4.24



### Serie 1: 102.4 (97)

9.9 ←	10.5* ↘	9.8 ↘	10.2 ↗	9.9 ←
10.7* →	10.6* →	10.1 ↘	10.2 ↘	10.5* ↗

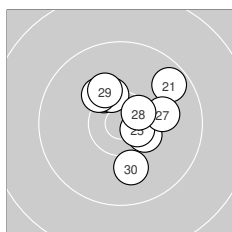
beste Teiler: 196.9 (6.), 270.0 (7.), 335.4 (2.)  
 Trefferlage: 0.50 mm rechts, 1.02 mm tief  
 Streuwert: 4.51, horizontal: 5.39, vertikal: 3.41



### Serie 2: 101.9 (98)

10.5* ↑	10.0 ↘	10.4* →	10.2 ↖	10.5* ↘
10.4* ↘	9.7 ↘	10.7* ↗	10.1 →	9.4 ↘

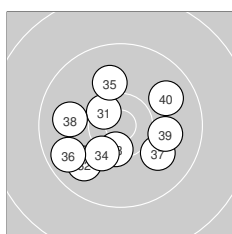
beste Teiler: 172.6 (18.), 341.2 (11.), 363.2 (15.)  
 Trefferlage: 2.85 mm rechts, 1.18 mm tief  
 Streuwert: 4.60, horizontal: 5.37, vertikal: 3.68



### Serie 3: 102.3 (99)

9.7 ↗	10.4* ↘	10.3* ↘	10.3* ↑	10.6* ↘
10.2 ↘	10.1 →	10.5* →	10.2 ↘	10.0 ↓

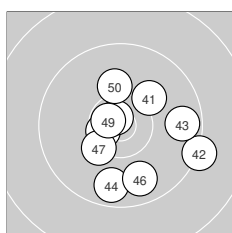
beste Teiler: 286.2 (25.), 337.8 (28.), 428.9 (22.)  
 Trefferlage: 1.55 mm rechts, 1.86 mm hoch  
 Streuwert: 4.08, horizontal: 4.01, vertikal: 4.15



### Serie 4: 100.8 (96)

10.5* ↘	9.9 ↗	10.5* ↓	10.3 ↗	10.1 ↑
9.7 ↗	10.0 ↘	9.9 ←	10.0 →	9.9 ↗

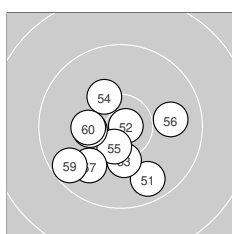
beste Teiler: 349.6 (31.), 392.0 (33.), 543.3 (34.)  
 Trefferlage: 1.02 mm links, 1.04 mm tief  
 Streuwert: 5.28, horizontal: 6.00, vertikal: 4.45



### Serie 5: 101.2 (96)

10.2 ↗	9.3 ↘	9.7 →	9.7 ↓	10.6* ←
9.8 ↘	10.3* ↗	10.8* ↘	10.7* ↖	10.1 ↑

beste Teiler: 146.6 (48.), 215.0 (49.), 296.9 (45.)  
 Trefferlage: 1.88 mm rechts, 1.40 mm tief  
 Streuwert: 5.41, horizontal: 5.62, vertikal: 5.19



### Serie 6: 101.8 (96)

9.8 ↘	10.8* →	10.3 ↓	10.3 ↘	10.5* ↓
9.9 →	9.9 ↗	10.3* ←	9.7 ↗	10.3* ←

beste Teiler: 84.3 (52.), 340.9 (55.), 498.5 (58.)  
 Trefferlage: 1.32 mm links, 2.45 mm tief  
 Streuwert: 4.57, horizontal: 4.95, vertikal: 4.16