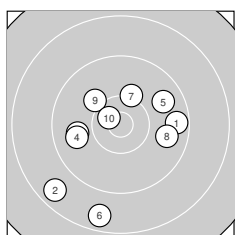
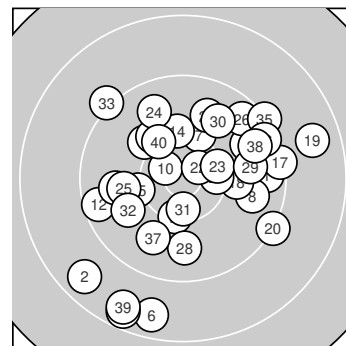
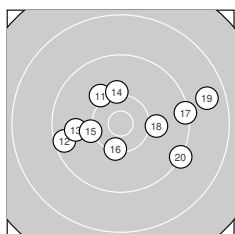


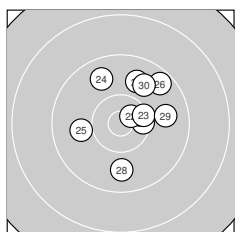
**Ergebnis:** **369** (388.9)  
**Serien:** 91 94 94 90  
**Zähler:** 14 21 5 0 0 0 0 0 0 0  
**Innenzehner:** 4  
**Weiteste:** 1942 (34.), 1891 (39.), 1866 (6.)  
**beste Teiler:** 253.0 (22.), 270.8 (10.), 406.0 (31.)  
**Trefferlage:** 0.53 mm rechts, 0.28 mm tief  
**Streuwert:** 7.68, horizontal: 8.02, vertikal: 7.32



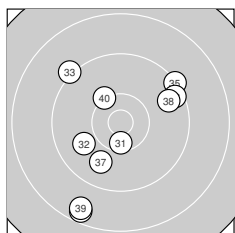
**Serie 1: 91 (96.9)**  
 9.6 →      8.6 ↙      9.9 ←      9.8 ←      9.7 ↗  
 8.6 ↓      10.2 ↑      9.8 →      10.1 ↖      10.6\* ↘  
**beste Teiler:** 270.8 (10.), 619.5 (7.), 704.5 (9.)  
**Trefferlage:** 1.09 mm links, 2.08 mm tief  
**Streuwert:** 8.17, horizontal: 8.49, vertikal: 7.84



**Serie 2: 94 (97.4)**  
 10.1 ↘      9.5 ←      9.8 ←      10.2 ↑      10.2 ←  
 10.3 ↓      9.3 →      10.1 →      8.7 →      9.2 ↘  
**beste Teiler:** 519.9 (16.), 618.9 (15.), 637.5 (14.)  
**Trefferlage:** 1.73 mm rechts, 0.06 mm hoch  
**Streuwert:** 7.75, horizontal: 9.96, vertikal: 4.57



**Serie 3: 94 (99.7)**  
 10.4\* →      10.6\* ↗      10.3 →      9.7 ↖      10.0 ←  
 9.5 ↗      9.8 ↑      9.8 ↓      9.8 →      9.8 ↗  
**beste Teiler:** 253.0 (22.), 451.2 (21.), 488.6 (23.)  
**Trefferlage:** 2.44 mm rechts, 2.72 mm hoch  
**Streuwert:** 5.44, horizontal: 5.15, vertikal: 5.72



**Serie 4: 90 (94.9)**  
 10.4\* ↓      9.9 ↙      9.2 ↘      8.5 ↓      9.3 ↗  
 9.4 ↗      9.8 ↓      9.6 →      8.6 ↓      10.2 ↖  
**beste Teiler:** 406.0 (31.), 588.2 (40.), 846.2 (32.)  
**Trefferlage:** 0.92 mm links, 1.85 mm tief  
**Streuwert:** 9.24, horizontal: 8.38, vertikal: 10.03

